

# Participant Instructions

We have a very large parade for 2018. The most important thing for all to remember is SAFETY.

Little Mack will be reduced to one lane in each direction between 10 Mile and Harper. One lane of NB and SB Little Mack will remain open. The lane reconfigurations will start 10:00-10:15am.

11 Mile Rd. will remain open for WB traffic. EB 11 Mile Rd. will be closed at Little Mack. There will be cones in the turn-arounds so that vehicles cannot come back EB off of WB 11 Mile or the side streets north of there.

Because of the size of our parade this year, we are asking that those with trailers, floats, or vehicles that are going to be driving in the parade, to show up at 10:30AM.

The rest of the participants should show up at 11AM

It will be a very busy area, and Little Mack will most likely be backed up during this time.

The plan is to have everyone in their spots by Noon.

Remember, SAFETY, please take your time getting to the staging area for the parade. The parade doesn't step off till 1:00PM, so you will have plenty of time if you are running a little late.

Please remember that a patriotic theme must be followed by all bands and musical accompaniments and in motorized float entries. Failure to comply may result in not being admitted to the parade.

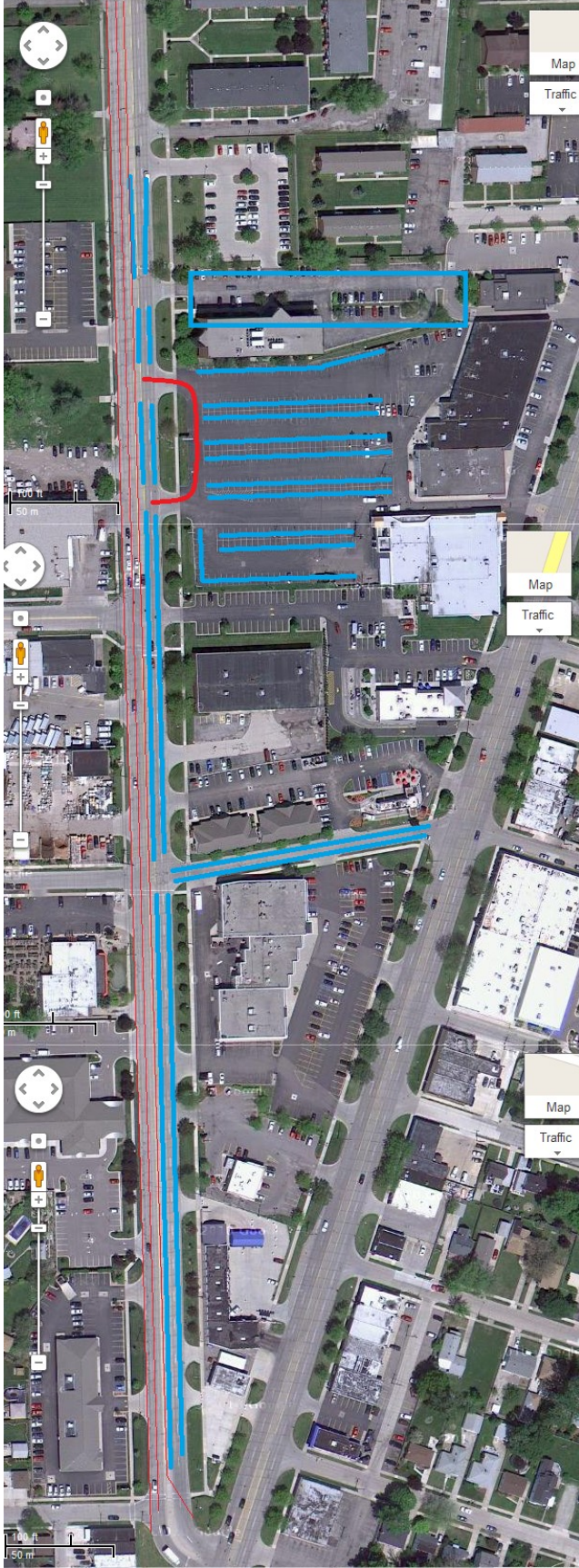
# Participant Parking



- The marked spots in blue above are available for all participants to park their vehicles on parade day.
- We will have a bus going up and down Stephens between Little Mack and Civic Arena for participants to ride on (Red line)



- After the parade, the buses will be transporting people from the end of the parade route back to their vehicles that need to be brought back.



- If a parking lot has spaces marked, please use those so we can fit as many vehicles into the parking lots as possible.
- There will be signs or people directing participants into these lots

## Parade Staging

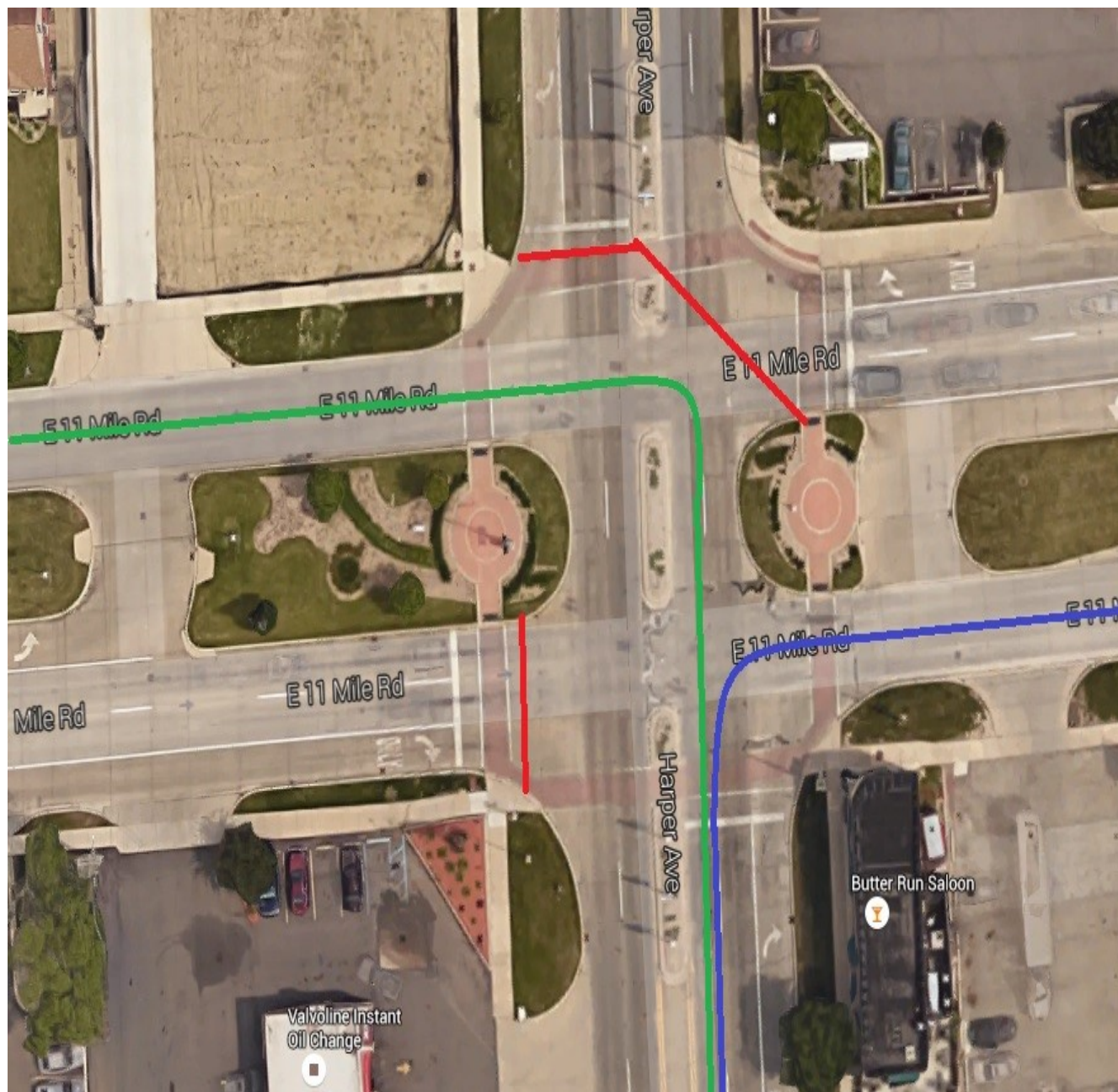
The staging area for 2016 will be in the Barrister Gardens parking lot and on the NB lanes of Little Mack

The SB lanes of Little Mack will be one lane traffic each direction.

The solid red line will be a bus drop off only. Enter from the north entrance, and exit the south drive.



# Parade Exit



At the end of the parade route, participants NOT IN A VEHICLE will go east on 11 Mile to the waiting buses (follow blue line). The transport buses...Fishbones & Pat O'Briens will pick up participants and volunteers at Butter Run at the end of the parade.

VIP cars with dignitaries will also go right on 11 Mile to the courthouse.

All other vehicles go west on 11 Mile (follow green line) toward Little Mack. We **MUST** keep the parade moving, so please disperse as quickly and safely as possible.

Buses will be allowed to park in the EB lane of 11 Mile East of Harper (Please do not block driveways).

Thank you for your cooperation, and  
your participation in our parade.

## SCS Memorial Day Parade

